



MONTHLY MEMBERSHIP PROGRESS REPORT

Results as of: 6/30/2015

Multiple District 2

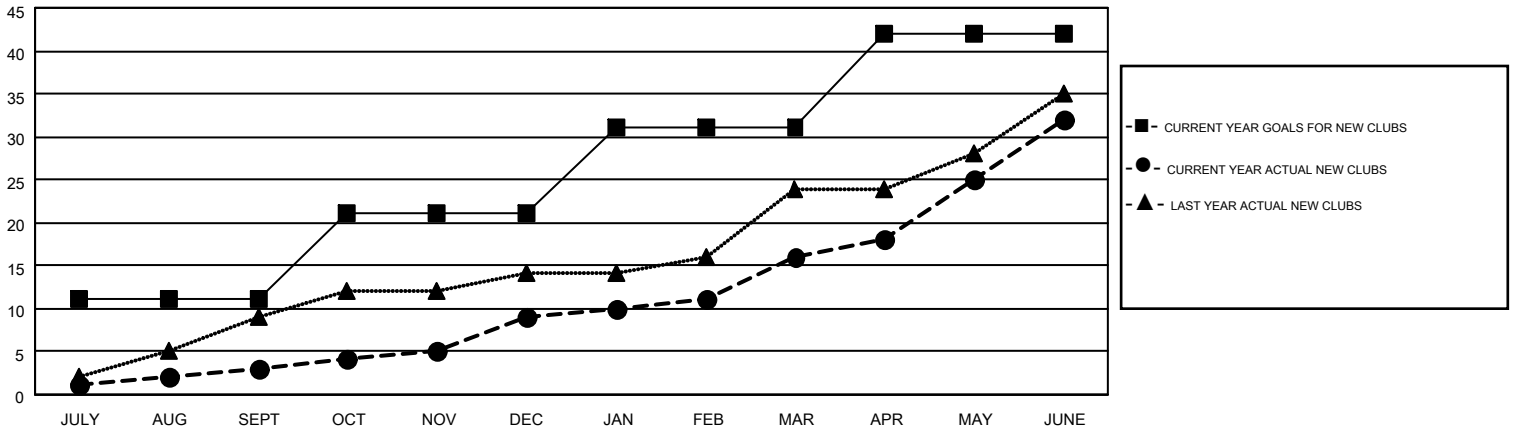
LOCATION: TEXAS

GMT: HAL GRIFFIN

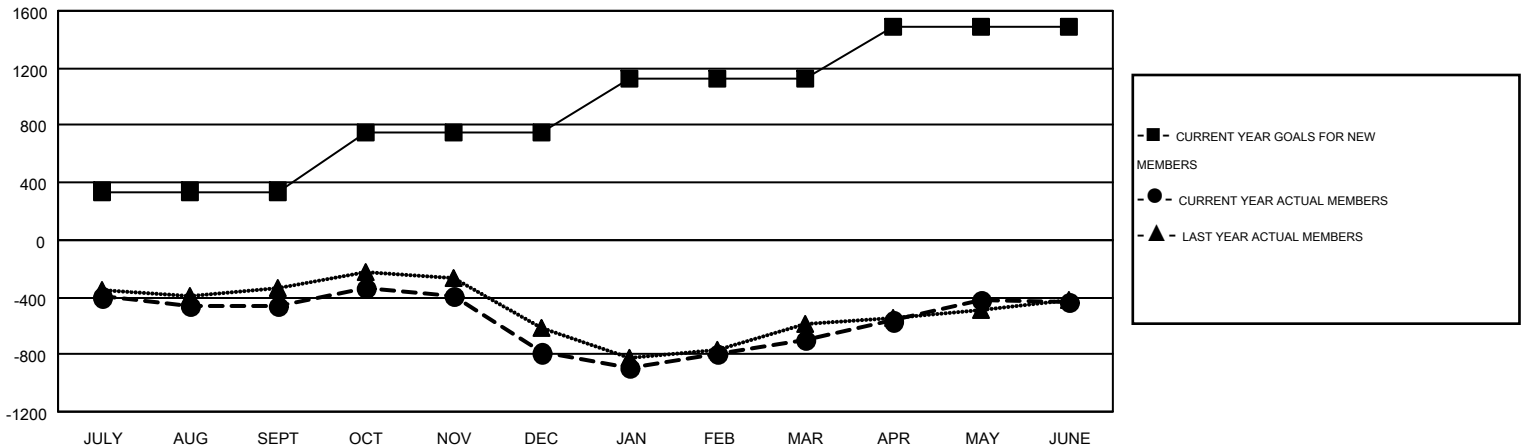
GMT CA 1

Clubs					Members				
RESULTS FOR 2014-2015					RESULTS FOR 2014-2015				
QUARTER	NEW CLUB GOAL	NEW CLUBS	DROPPED CLUBS	NET GAIN/LOSS	QUARTER	NEW MEMBER GOAL	CHARTER AND NEW MEMBERS ADDED	DROPPED MEMBERS	NET GAIN/LOSS
JULY/AUG/SEPT	11	3	9	-6	JULY/AUG/SEPT	339	932	1,389	-457
OCT/NOV/DEC	10	6	17	-11	OCT/NOV/DEC	408	1,041	1,373	-332
JAN/FEB/MAR	10	7	8	-1	JAN/FEB/MAR	377	1,199	1,104	95
APR/MAY/JUNE	11	16	11	5	APR/MAY/JUNE	368	1,262	999	263

GOALS AND ACTUAL NEW CLUBS CUMULATIVE



GOALS AND ACTUAL MEMBERS CUMULATIVE



DROPPED CLUBS: 45	653 CLUBS OF 938 ADDED 1 OR MORE NEW MEMBERS	<u>GENDER DISTRIBUTION</u>	
<u>DROPPED MEMBERS</u>		MALE	17,631 (67.02%)
DECEASED	345	FEMALE	8,675 (32.98%)
CLUB CANCELLED	357	<u>FAMILY UNIT MEMBERS</u> 3,856	
OTHER	4,163	<u>HEAD OF HOUSEHOLD</u> 1,889	
TOTAL	4,865	<u>NON-HEAD OF HOUSEHOLD</u> 1,967	

[CLICK HERE FOR HEALTH ASSESSMENT DATA](#)